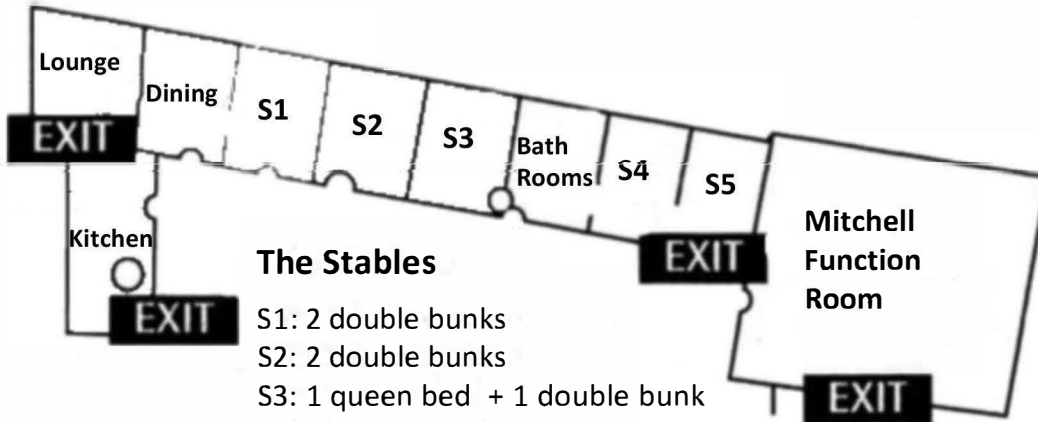


KIHILLA RETREAT & CONFERENCE CENTRE SITE PLAN



The Stables

- S1: 2 double bunks
- S2: 2 double bunks
- S3: 1 queen bed + 1 double bunk
- S4: 1 queen bed + 1 double bunk
- S5: 2 single beds
- subtotal: 16 beds (max 18 people)

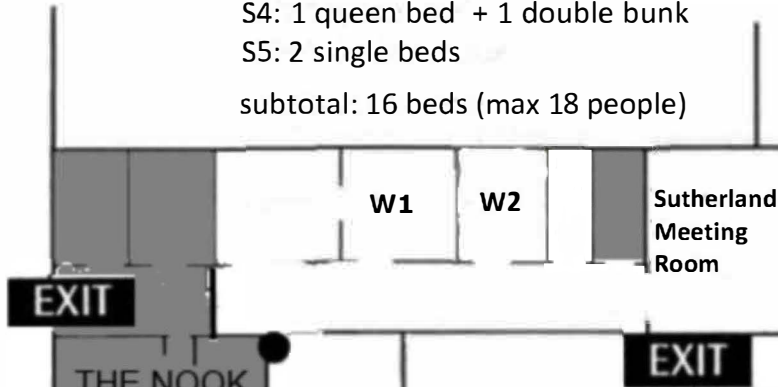
Mitchell Function Room

EXIT

The West Wing

- W1: 1 trio bunk + 1 double bunk + 1 single bed
- W2: 1 trio bunk + 1 double bunk + 1 single bed
- subtotal: 10 beds (max 12 people)

(NB: Trio bunk is a double bed with a single bunk above)

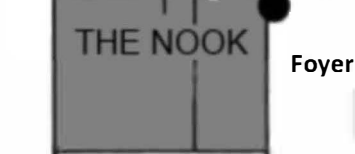


W1

W2

Sutherland Meeting Room

EXIT

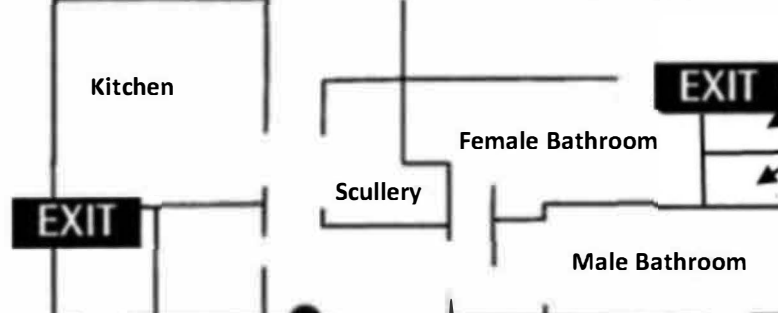


THE NOOK

Foyer

EXIT

Courtyard/ Entrance



Kitchen

Scullery

Female Bathroom

Male Bathroom

External bathroom

Laundry

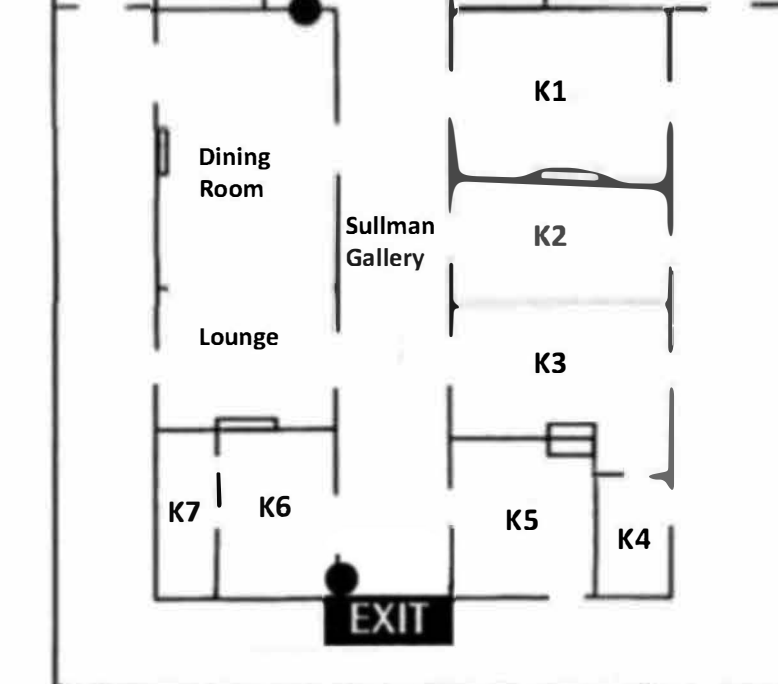
EXIT

Kihilla Main House

- K1: 5 double bunks
- K2: 4 double bunks
- K3: 3 double bunks + 2 trundles
- K4: 2 double bunks
- K5: 3 double bunks
- K6: 3 double bunks
- K7: 2 double bunks
- subtotal: 46 beds

Total: 72 beds

(max 76 people with two in each double bed)



Dining Room

Lounge

Sullman Gallery

K1

K2

K3

K7

K6

K5

K4

EXIT

www.kihilla.org.au

updated November 2020